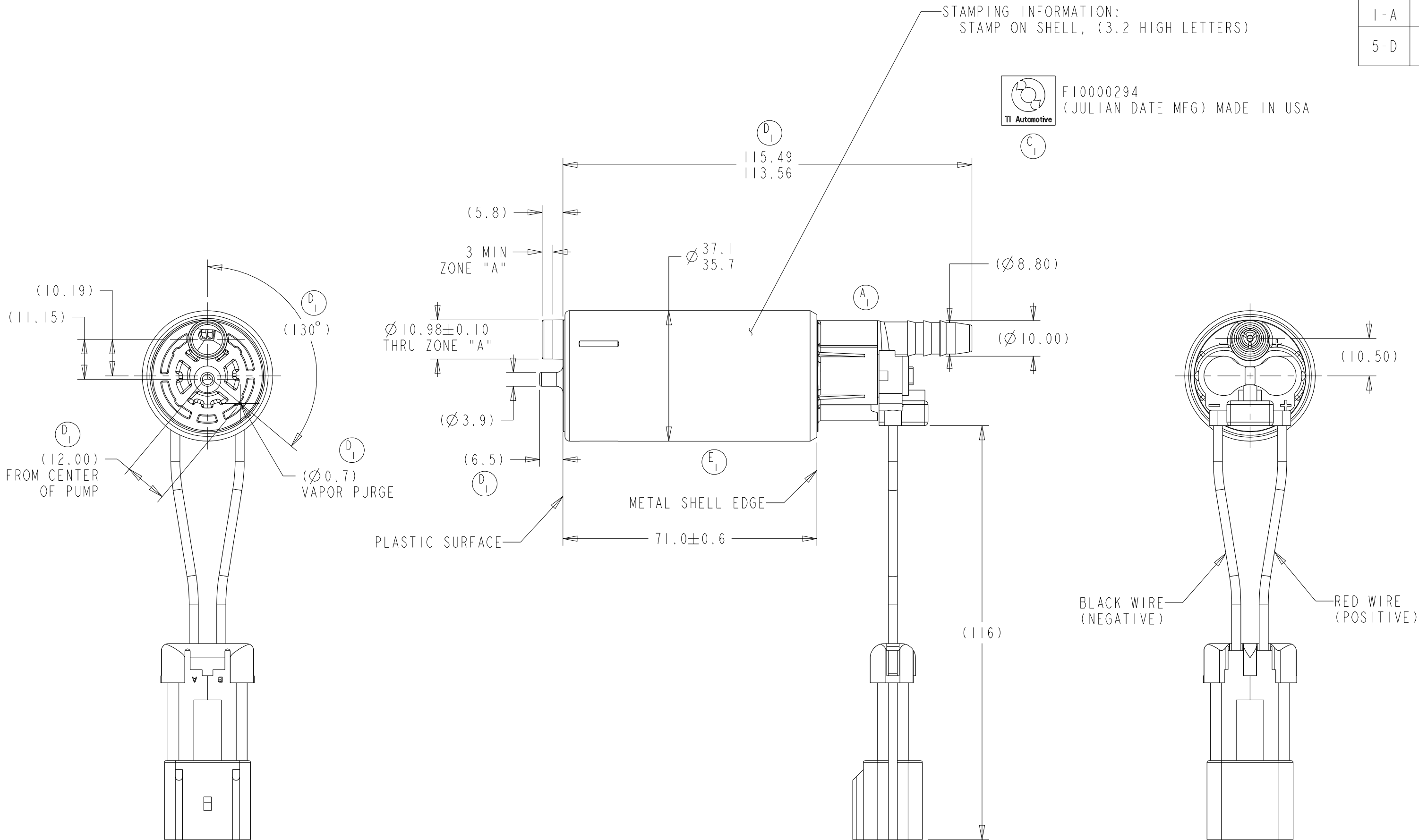


REVISIONS						
ZONE	LTR	DESCRIPTION	CHANGE No	DATE	BY	APPR'D
		RELEASE FOR PRODUCTION	C'33	18DEC08	DRG	MMc
5-D	A	A1 0213761 COVER WAS 0213598	71848	05FEB09	DRG	MMc
	B	B1 USILYS INLET PARTS WERE PMC	C'528	17MAY11	WDE	MMc
4-E	C	C1 ADDED TI AUTOMOTIVE LOGO	78165	17MAY16	JAK	MAS
---	D	D1 RE-RELEASED PUMP AS A TI.9 WAS TI.78 D2 HJQG1294 WAS F10000294	83242	01AUG22	SLK	TLH
5-D	E	E1 DBTC000302 MAGNETS WERE 1840034	C3'4491	23AUG23	JTK	MLM



F10000294  
(JULIAN DATE MFG) MADE IN USA

C1

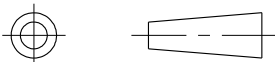



NOTES:

- 1) PUMP WILL BE PACKAGED WITH THE FOLLOWING COMPONENTS TO PREVENT CONTAMINATION BY FOREIGN MATERIAL
- INLET PLUG PROTECTOR
  - OUTLET PLUG PROTECTOR
  - POLYBAG

D1 2) MODEL TI.9, CARTRIDGE BRUSH PUMP, DIN 1 RF1

KEY PRODUCT CHARACTERISTICS				
REFER TO TI AUTOMOTIVE GLOBAL ADVANCED QUALITY PLANNING DOCUMENT CW-4-ALL-411 FOR THE CLASSIFICATION AND CONTROL OF KEY PRODUCT CHARACTERISTICS				
TYPE OF CHARACTERISTIC	SAFETY	REGULATORY	FUNCTION	FUNCTION PROCESS
	SC	SC	SC	SC
NUMBER PER EACH CHARACTERISTIC	--	--	--	--
TOTAL NUMBER OF CHARACTERISTICS	--	--	--	--
- TI AUTOMOTIVE CONFIDENTIAL AND PROPRIETARY - THIS DRAWING IS PROPERTY OF TI AUTOMOTIVE. TI AUTOMOTIVE CLAIMS PROPRIETARY RIGHTS IN THE SUBJECT MATTER SHOWN AND DESCRIBED ON THIS DRAWING AND RETAINS ALL INTELLECTUAL PROPERTY RIGHTS. THE DRAWING IS PROVIDED FOR REFERENCE PURPOSES ONLY AND ON THE EXPRESS CONDITION THAT IT WILL BE HELD IN CONFIDENCE. THIS DRAWING SHALL NOT BE DISCLOSED TO OTHERS OR USED FOR THE PURPOSE OF MANUFACTURE BY OR PROCUREMENT FROM OTHERS OF THE ARTICLE OR PART SHOWN WITHOUT TI AUTOMOTIVE'S EXPRESS WRITTEN CONSENT. NO LICENSE OR OTHER RIGHT IS GIVEN OR IMPLIED BY THE PROVISION OF THIS DRAWING TO RECIPIENT. COPYRIGHT, TI AUTOMOTIVE 2018. ALL RIGHTS RESERVED.				

METRIC			
ALL DIMENSIONS ARE IN MILLIMETERS			
DO NOT SCALE			
DECIMAL TOLERANCES UNLESS OTHERWISE SPECIFIED ONE PLACE ±0.25 TWO PLACE ±0.13 ANGLES ±1°			
		THIRD ANGLE PROJECTION	
DIMENSIONS IN ACCORDANCE WITH ASME Y14.5 - 2009			
		630 COLUMBIA ST. CARO, MI 48723 +1 989.673.7727	
		TI Automotive	
ENGINEER:	M.McKERVEY	18DEC2008	MATERIAL/SPECIFICATION:
DESIGNER:	D.GILBERT	18DEC2008	
CAD SYSTEM: PRO/E	SCALE: 1:1	SHEET NO. 1 OF 1	
REFERENCE ID/REV.: HJQG1294		2D PLM REFERENCE/REV.: AR0064856/AB	
REFERENCE ID/REV.: 000130320/AB		3D PLM REFERENCE/REV.: AR0064855/AB	
DRAWING NAME: FUEL PUMP OUTLINE			
SIZE: A2	DRAWING NUMBER: HJQG1294 